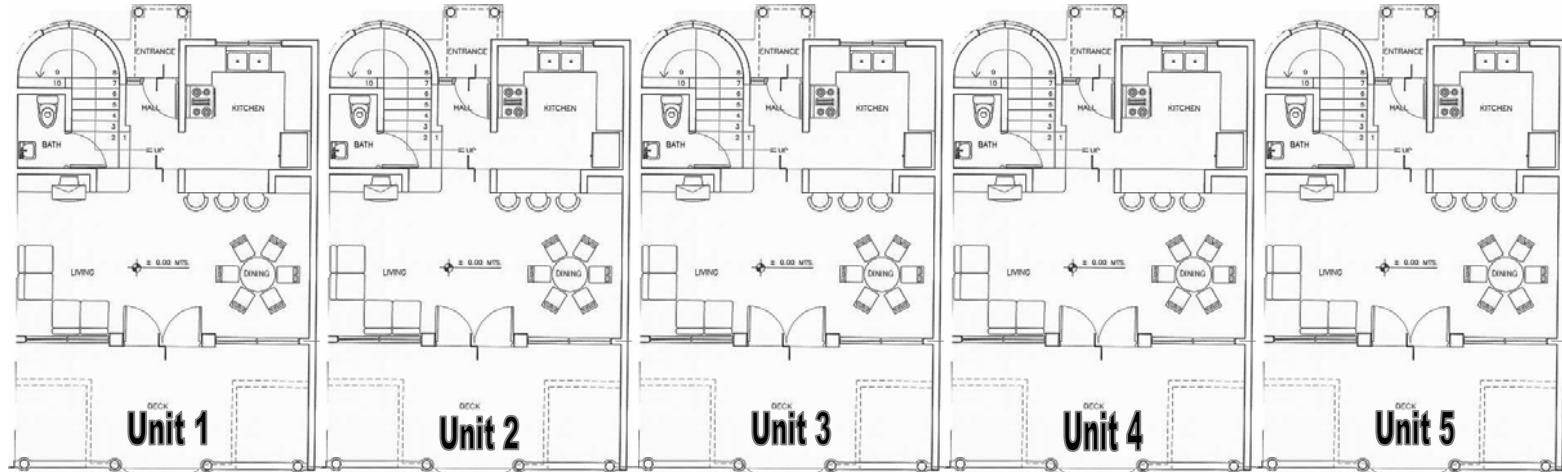




## Construction Pricing

Unit # 3.....	<del>\$189,000</del>	<b>SOLD</b>
Unit # 2.....	<del>\$199,000</del>	<b>SOLD</b>
Unit # 4.....	<del>\$199,000</del>	<b>SOLD</b>
Unit # 1 & 5 (Prior to Completion)	\$209,000	
Unit # 1 & 5 (After Completion)	\$218,000	





## Limited Time Construction Payment Plan

- 50% at time of contract
- 50% over 24 months @ 0% thru NDC
- Or 20% Down & Finance thru Titan Reserve, LLC.

Paradise Development Holdings, S.A. reserves the right to make changes or modifications to maps, plans, specifications, materials, features and colors without notice. Optional features and colors may be included at additional cost, subject to construction cut-off dates. Special wall and window treatments, upgraded floor coverings, softscape, hardscape, landscape and other items found in and around models are decorator suggested and not included in the purchase price. All renderings, floorplans and maps are artist conceptions and are not intended to be an actual depiction of the building, fences, walks, driveways or landscaping. Homeowner's Association, supported by all residents, maintains common facilities. Prices and plans to build out this project are subject to change without notice. The Paradise Development Holdings, S.A. logo is a registered trademark of PDH, S.A.